

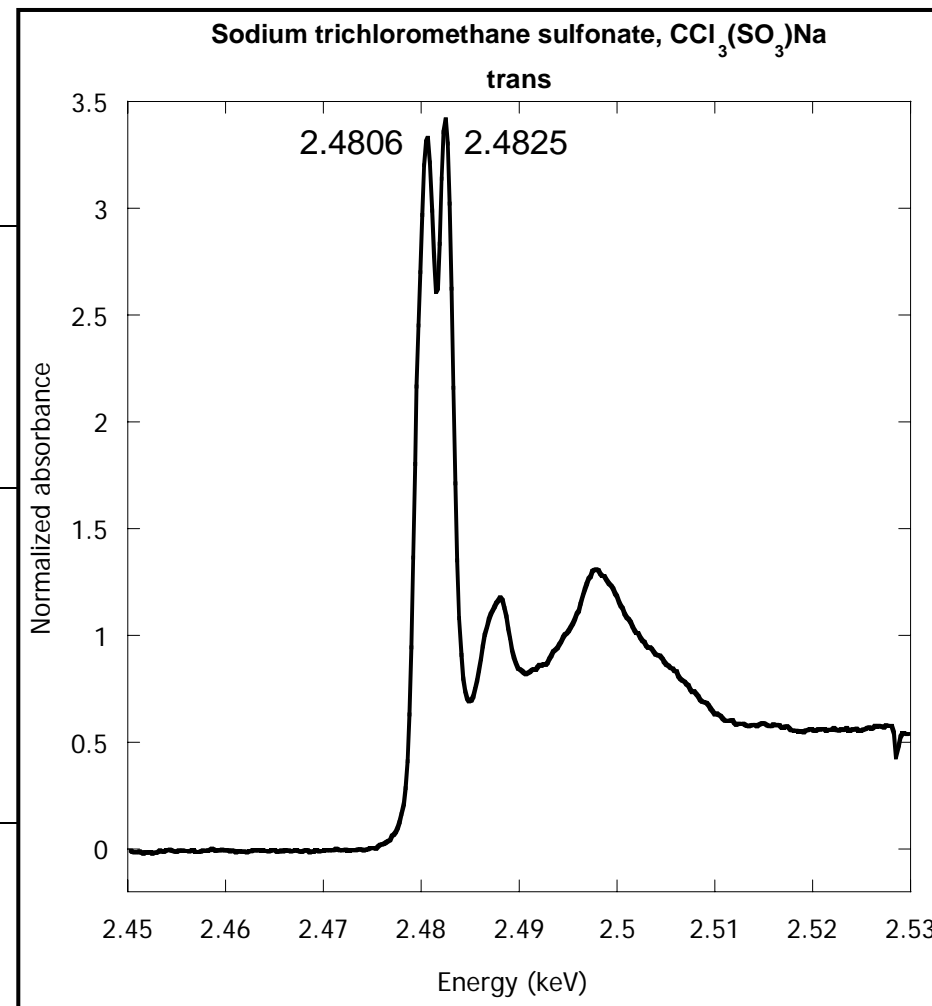
S⁴⁺**Sodium trichloromethane sulfonate monohydrate****CCl₃SO₃Na, H₂O**

Mineralogical Group: **sulfite**
S environment: **C3v coordinance**
Crystal system: **monoclinic**



Origin: **synthesized**
Chemical composition: **44.42% Cl; 5.02% C; 13.39% S;**
9.60% Na; 0.84% H & 26.73% O
Preparation of sample: **colorless crystals**

Crystallinity state:

Acquisition mode: **transmission, fluorescence (photodiode)**Date of acquisition: **14/11/2005**X-ray absorption data (normalized): [CCl3SO3Na_trans_norm.dat](#)
[CCl3SO3Na_fluo_norm.dat](#)Calibration with CaSO₄
Max of the “white-line” (s → p electronic transition) at **2.4825** KeVContact person: **Sanström**Author
Journal

Comments : The sample was prepared according to the reference: H. G. M. Edwards, D. N. Smith, J. Mol. Struct., 1991, 263, 11-20.

Additional information