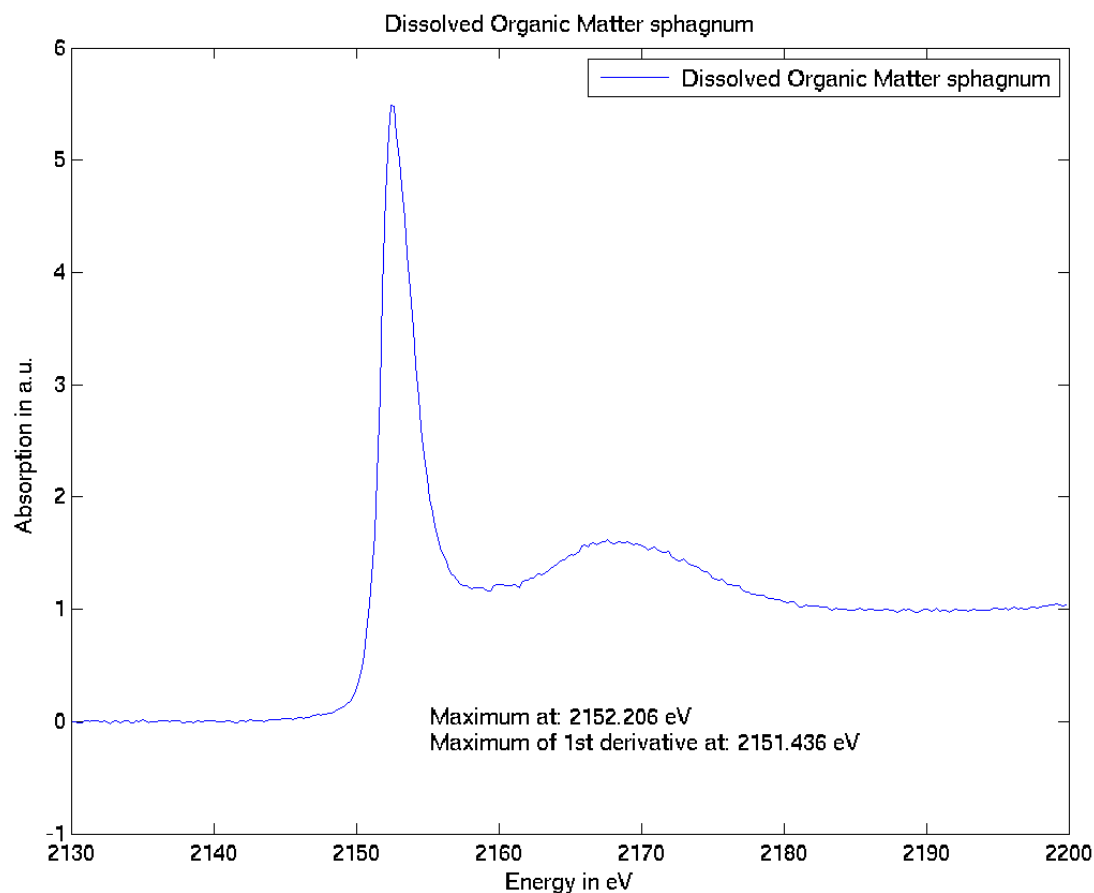


Dissolved Organic Matter (DOM) from sphagnum



Phosphorus type: **terrestrial organic phosphorus**

Origin: **Extracted from sphagnum peat (ISTERRE, Grenoble, France)**

CAS: -

Acquisition mode: **fluorescence**

Monochromator: **Si(111)**, calibrated in energy by fixing the position of the maximum of the white-line of hydroxyapatite ($\text{Ca}_5(\text{PO}_4)_3(\text{OH})$) at **2152.7 eV**

Max of the “white-line” (s → p electronic transition) at **2152.206 eV**

Max of the first derivate (taken for normalisation) at **2151.436 eV**

Contact Person: **Camille Rivard**

Author: **Rivard, Lanson, Cotte**

Journal: **Plant Soil (2016) 401: 7.**

Comments:

Additional Information: