

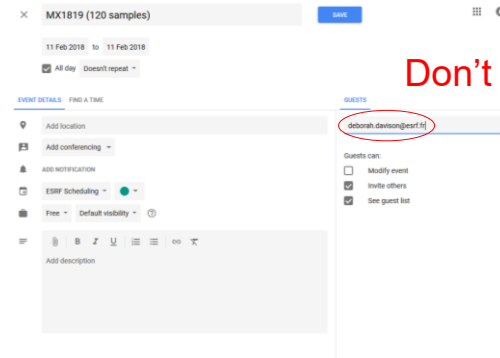
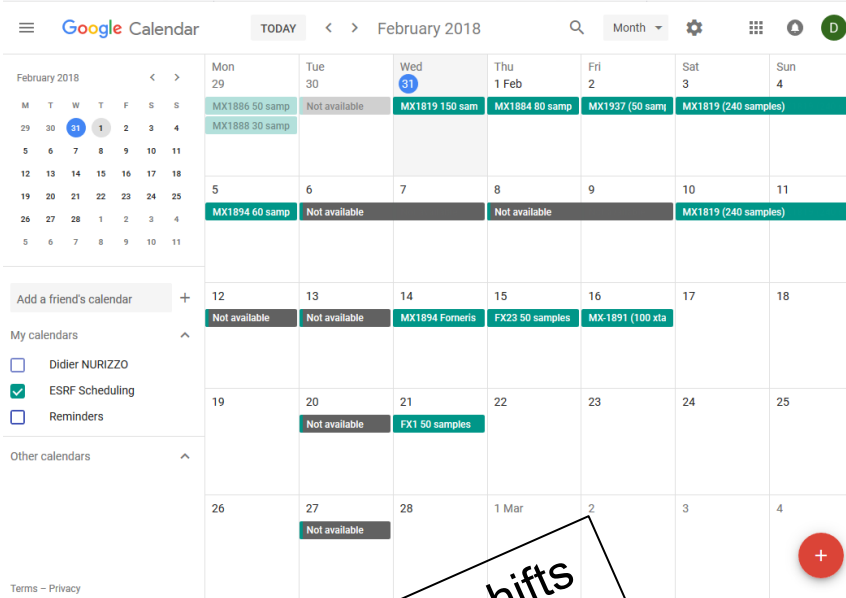
# Massif1 from the User side

Fixed wavelength  
Fully automated beamline

Matthew Bowler and Didier Nurizzo

# MASSIF-1: BOOKING

In “ESRF Scheduling” calendar



40 samples per shifts  
(two Dewars per day)

Generating invitation from User Office  
A-form ready for submission  
Samples declaration to be checked by Safety

# DEWAR PREPARATION

## Create a Shipment

Shipment form fields:

- Name: BAG meeting Test
- Beamline: ID30A-1
- Comments:
- From: NURIZZO-ESRF-GRENOBLE
- Return address: Same as for shipping to location

with SC3 containers  
and barcodes

ExiMX Extended ESI/MS for MXTools

Shipment details:

- Name: BAG meeting Test
- Beamline: ID30A-1
- Date: 11/02/2018
- Status: opened
- From: NURIZZO-ESRF-GRENOBLE
- Return details: Courier company: Center account: 11183
- Content (2 Parcels - 1 Samples - 0 Measured):

Container selection table:

Name	Dewar 1	Dewar 2
Status	Sent_M_ESRF	Sent_M_ESRF
Location	ID30A-1	ID30A-1
Storage	N/A	N/A

Buttons: Add container, Edit, Print labels

Label form fields:

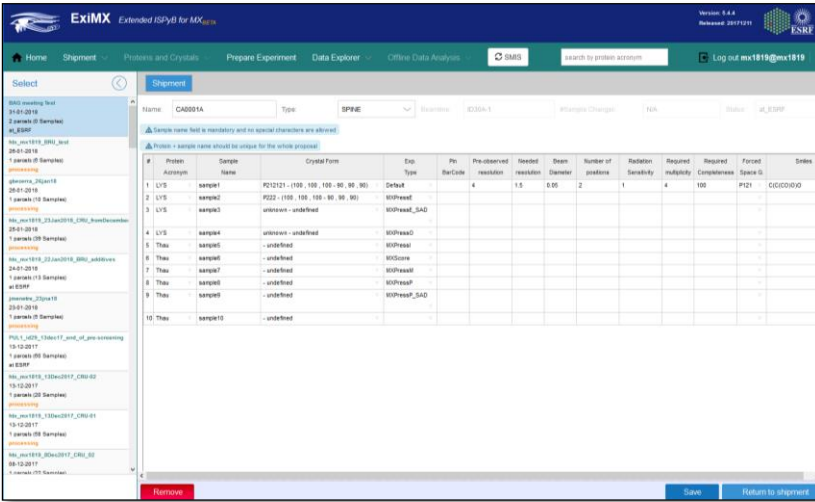
- Parcel label: Dewar 1
- Shipment name: BAG meeting Test
- Number of parcels: 2
- Proposal number: MX1819
- Laboratory name: ESRF
- Local contact: BOWLER M

## Label your transport dewars

Shipping label content:

- Barcode: \* E S R F 0 3 1 3 9 9 3 \*
- TO: ESRF Magasin, 71 Avenue des Martyrs, 38000 Grenoble, FRANCE
- Contact: Tel: +33 (0)4 76 88 2733, +33 (0)4 76 88 7352, Fax: +33 (0)4 76 88 2347
- Instructions: Frozen samples in Dry-Shipper for experiments at ESRF. Not restricted, As per IATA special provision A162.
- Handling: FRAGILE, THIS WAY UP, HANDLE WITH CARE, DO NOT DROP
- Sender: FROM: (Lab-contact sending) NURIZZO Didier, ESRF, 71 avenue des Martyrs, CS 40220, 38043

# SAMPLE PREPARATION



<http://www.esrf.eu/MXPressE>

## MXPressE/P and MXPressE/P-SAD:

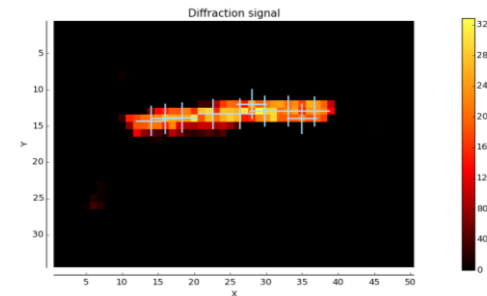
- Optical loop centering
- Xray centering
- Edna strategy with beam adjusted to crystal size
- Data collection around a single point or pseudo helical
- Automatic processing

## MXPressM:

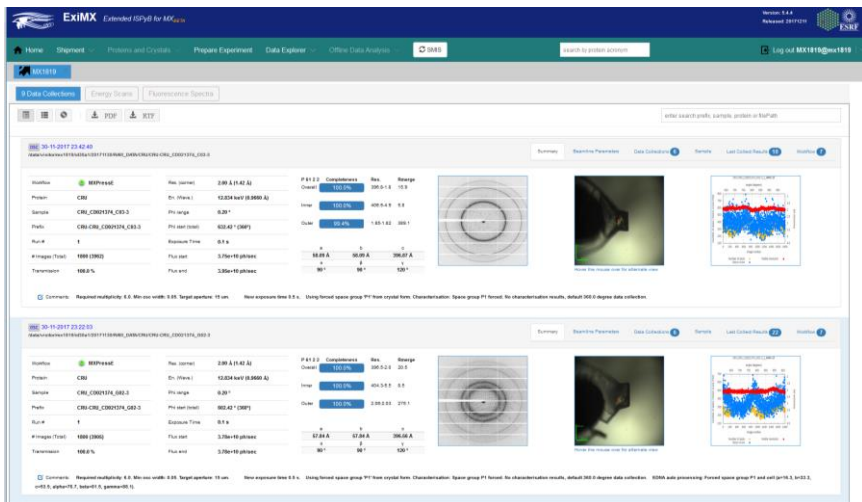
- Optical loop centering
- High dose mesh with loop perpendicular to X-ray

## MXPressO:

- Optical loop centering
- Data collection at pre-observed resolution
- Automatic processing

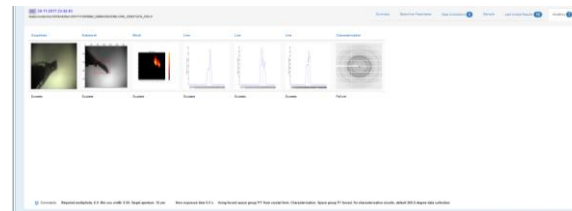


# RESULTS



Data processing accessible on-line  
One-click downloading

## Sample centring and characterisation



## Automatic data processing



# MASSIF-1 TAKE HOME MESSAGE

On-line scheduling

Dewar return free of charge

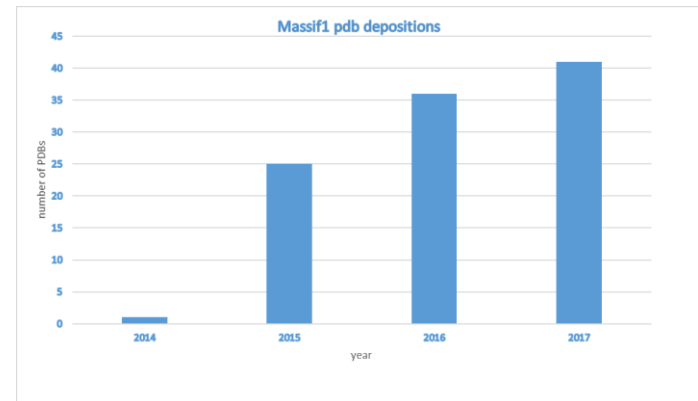
SPINE standard pins in SC3 pucks

No restraint on loop size and shape

Automatic data collection and processing

Results accessible on the fly and on-line

40,000 samples collected  
since September 2014  
(14,000 per year)



Any questions: [Deborah.davison@esrf.fr](mailto:Deborah.davison@esrf.fr), [mbowler@embl.fr](mailto:mbowler@embl.fr) and [Didier.nurizzo@esrf.fr](mailto:Didier.nurizzo@esrf.fr)